

## *Cantharellus pseudoformosus*, a new species associated with *Cedrus deodara* from India

Deepika Kumari · Ramesh C. Upadhyay ·  
Mondem S. Reddy

Received: 30 July 2009 / Accepted: 12 October 2010 / Published online: 23 November 2010  
© The Mycological Society of Japan and Springer 2010

**Abstract** The genus *Cantharellus* is known to have a global distribution and to form ectomycorrhizal associations with a diverse set of host plants. Here we describe *Cantharellus pseudoformosus* as a species new to science with a possible association with *Cedrus deodara*. ITS and LSU data demonstrated that the material from India is distinct from *Cantharellus formosus* and other closely related species.

**Keywords** Chanterelle · Edible mushroom · ITS · LSU · Taxonomy

### Introduction

*Cantharellus* species are wild edible mushrooms harvested from Europe, Africa, Asia, and North America (Danell 1999; Dunham et al. 2003a,b). Species of *Cantharellus* form ectomycorrhizal associations with a wide range of economically important host trees (Redhead et al. 1997) and are known from every continent except Antarctica (Corner 1966; Watling and Abraham 1992). The economic importance and the evolutionary significance of the Cantharellaceae have resulted in considerable research on their

ecology, physiology, and phylogenetics (Danell 1994; Dunham et al. 2003b). Arora and Dunham (2008) emphasized that the name of *Cantharellus cibarius* Fr. has been broadly applied regardless of its habitat, climate zone, ectomycorrhizal host, and geographic distribution. Because *Cantharellus* species exhibit limited morphological characters (Thiers 1985), the application of molecular tools plays an important role in defining species boundaries in *Cantharellus* (Arora and Dunham 2008). Phylogenetic analysis of the internal transcribed spacer (ITS) region and nuclear large subunit rRNA (LSU) in *Cantharellus* has helped to clarify the identity of different species (Redhead et al. 1997; Dunham et al. 2003a; Arora and Dunham 2008).

The forests of the northern Himalayas are diverse and contain many families of ectomycorrhizal trees such as Betulaceae, Fagaceae, and Pinaceae. In the present study, we report the occurrence of *Cantharellus pseudoformosus* as a species new to science from India. This fungus was found in mixed evergreen forests under *Cedrus deodara*, which normally supports a wide range of ectomycorrhizal fungi.

### Materials and methods

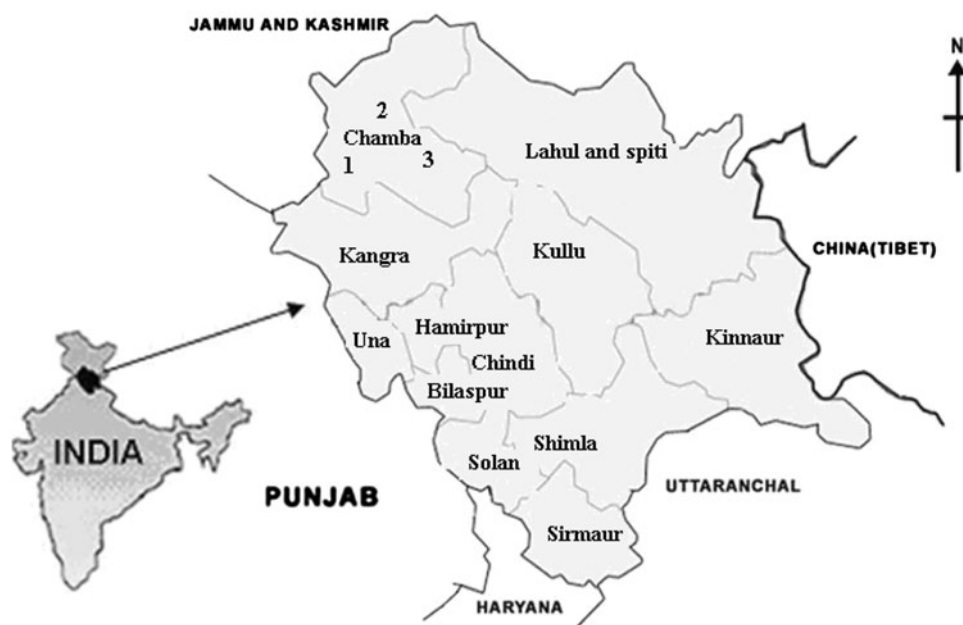
Fruit bodies were collected from Khajjiyar forest (India), stands distributed over 6,400 ha, latitude 32°10'N and 33°13'N and longitude 75°45'E and 77°33'E, of Himachal Pradesh, India (Fig. 1). The searches were conducted in the months of October 2006 and September 2007. To avoid resampling, basidiocarps of all collection sites were marked, and a minimum of 5 m distance was kept between any two fruit-body collections. Ecologically, the *Cedrus deodara* stands in Indian Himalaya are in contrast to those of North America, which may be dominated by *Pseudotsuga*, *Tsuga*, *Picea*, *Abies*, *Larix*, or *Pinus* species.

**Electronic supplementary material** The online version of this article (doi:10.1007/s10267-010-0080-5) contains supplementary material, which is available to authorized users.

D. Kumari · M. S. Reddy (✉)  
Department of Biotechnology, Thapar University,  
Patiala 147004, India  
e-mail: msreddy@thapar.edu

R. C. Upadhyay  
Directorate of Mushroom Research, Chambaghat,  
Solan 173213, India

**Fig. 1** A map of the Himachal Pradesh, India, showing the distribution of *Cantharellus pseudoformosus* in Chamba-Khajjiyar according to material examination. Collection sites: 1, at Khajjiyar (near the tourist information center); 2, Suala (25 km from the Khajjiyar guest house); 3, Bharmour (5 km from the Bharmour bus stand) (3)



**Map not to Scale**

Macroscopic morphological details of fresh specimens, such as size, shape, color, and texture, were recorded. Microscopic features were determined from rehydrated sections of basidiomata mounted in 3% KOH and stained with 2% Congo red, 2% phloxine, and Melzer's reagent. The spores were studied from the spore deposits and from fresh material as well. Macrochemical tests were performed according to the methods of Singer (1986). The specimens have been deposited in the Punjabi University Herbarium (PUN), Botany Department, Punjabi University, Patiala, India under the voucher numbers PUN3883, PUN4126, and PUN4128.

For molecular characterization, the genomic DNA was extracted from the fruit body by the method of van Kan et al. (1991). The DNA was quantified using a Nanodrop 1000 spectrophotometer (Thermo Scientific, USA). The ITS region of nrRNA was amplified by polymerase chain reaction (PCR) with ITS1 and ITS4 primers (White et al. 1990). The 5'-end of the nuclear large subunit rRNA was amplified with ITS4R (White et al. 1990) and LR5 (Vilgalys and Hester 1990) primers. The 50 µl reaction mixture for PCR amplification contained 10 ng DNA, 1× PCR buffer, 1.5 mM MgCl<sub>2</sub>, 0.2 mM of each dNTP, 0.5 µM of each primer, and 2.5 units of *Taq* polymerase (Fermentas, USA). Amplifications were performed in a thermal cycler (Perkin Elmer, USA) with an initial denaturation step of 94°C for 3 min followed by 35 cycles of 94°C for 1 min, 50°C for 1 min, and 72°C for 1.5 min, and a final extension of 72°C for 8 min. Before sequencing, PCR products were purified and subcloned in Ins TA clone PCR cloning kit (Fermentas) as per the manufacturer's instructions and transformed into *Escherichia coli* DH α

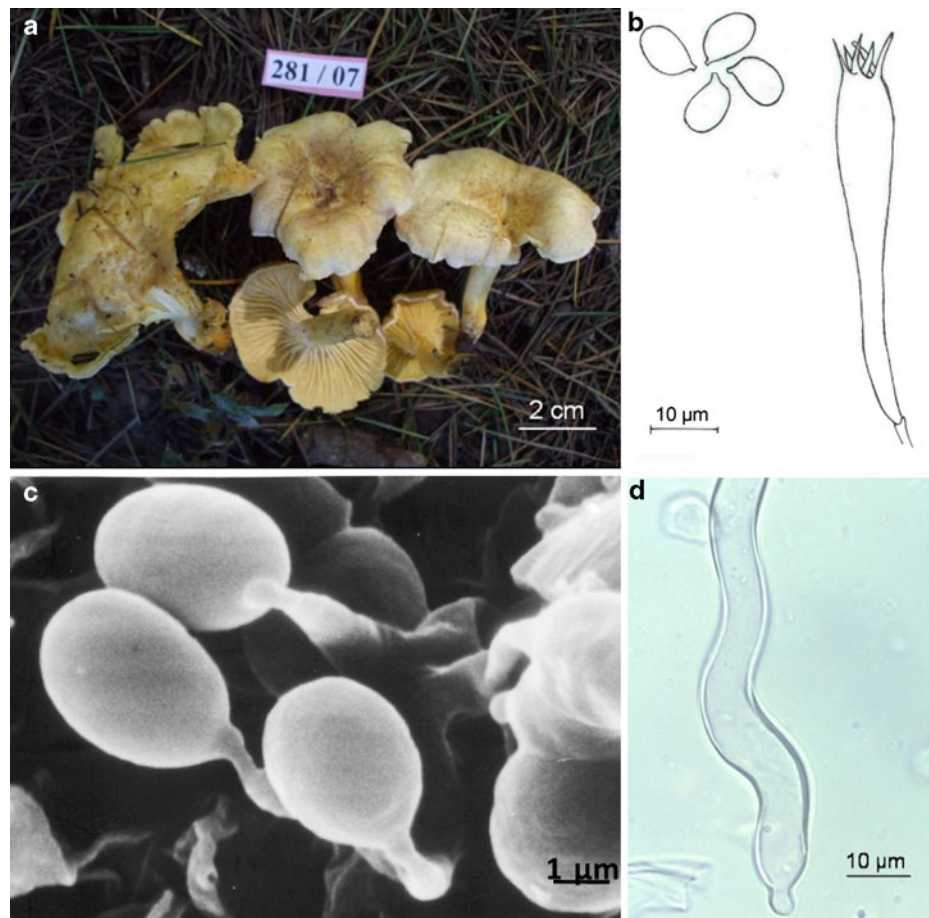
cells. Five randomly selected clones containing the insert of ITS and LSU of nrRNA were sequenced. Among five clones of ITS, the sequence of one clone differed by about 3% with other sequences. These sequences were deposited in GenBank under the accession numbers FJ769255 and HM776721, respectively. No variations were found for the LSU sequences among the clones, and the sequence reported in this article for the LSU of nrRNA has been deposited in GenBank under the accession number GU237071. A BLAST search was performed to find the possible sister groups of the newly sequenced taxa. The sequences were edited with BioEdit 5.0.6 (Hall 1999) and aligned using MAFFT ver. 6.240 with other sequences obtained from GenBank. The final alignment included 829 bp. The sequence alignment was submitted to TreeBASE (<http://www.phylo.org/treebase/>) under the submission ID number 10767. Phylogenetic analysis was performed by a maximum-parsimony method with MEGA software (Tamura et al. 2007). The maximum-parsimony tree was obtained using the close-neighbor-interchange algorithm with search level 3 (Nei and Kumar 2000), in which the initial trees were obtained with random addition of sequences (10 replicates). Clade stability was assessed in a bootstrap analysis with 1,000 replicates.

## Results and discussion

### Taxonomy

*Cantharellus pseudoformosus* Deepika, Upadhyay & Reddy, sp. nov. Fig. 2a–d

**Fig. 2** *Cantharellus pseudoformosus*: **a** basidiocarps (no. 281-07), **b** basidiospores and a basidium (no. 281-07), **c** basidiospores (scanning electron microscopy, SEM) (no. 281-07), **d** pileus hypha (no. 281-07) (voucher no. of 281-07 = PUN3883)



Mycobank no.: MB 519030

Pileus 1–3 cm latus, applanatus, depressus, in centro squamis brunneus, versus marginem brunneo-luteus vel bruneolo-aurantiacus, superficie sicco, non-hygrophano. Lamellae decurrentes, infirme intervenatae, incarnato-aurantiacae vel pallide aurantiacae. Stipes 2–4.5 cm longus, 0.3–0.6 cm crassus, teres, basi leviter clavatus, bruneolo-aurantiacus vel brunneus. Sporae in cumulo albae ad luteo-albae. Odor et sapor fructus indistincti. Basidiosporae  $7\text{--}9 \times 5\text{--}6 \mu\text{m}$ ,  $Q = 1.40$ , ellipsoideae, inamyloideae. Basidia  $\pm 40\text{--}45 \times 5.3\text{--}9 \mu\text{m}$ , cylindrica vel anguste clavata, sterigmatibus usque  $5.9\text{--}7.2 \mu\text{m}$  longis. Basidiola numerosa. Trama hymenophorale intertextum. Pleuro- vel cheilocystidia nulla. Epicutis pilei hyphosa. Fibulae praesentes.

In solo sub *Cedro deodara* ad Khajjiyar (2400 m), Chamba, Himachal Pradesh, India, conservati in Herbario Universitatis Punjabiensis (PUN), holotypus (PUN3883) et paratypi (PUN4126 et PUN4128).

Pileus 1–3 cm wide, applanate with depressed center, pecan brown in the center due to scales, brownish light yellow to brownish orange [Champagne (11B-3) to Beige (11B-4); Maerz and Paul (1930)] outwardly, surface dry,

non-hygrophanous, covered with indistinct scales; margin decurved, regular, non-striate; context thin, yellowish, unchanging on bruising. Lamellae decurrent, folded, weakly interveined, pinkish orange to light orange or yellowish orange, edges subacute, unchanging on bruising. Stipe  $2\text{--}4.5 \times 0.3\text{--}0.6 \text{ cm}$ , terete with slightly clavate base, lacunose, stipe surface glabrous, brownish orange to pecan brown, darker at base as leather brown, unchanging on bruising. Spore print white to yellowish white. Odor and taste indistinct. Basidiospores:  $7\text{--}9 \times 5\text{--}6 \mu\text{m}$  (mean value,  $7.6 \times 5.4 \mu\text{m}$ : 45 spores measured),  $Q$  (length/width ratio) = 1.40, ellipsoid, inamyloid, smooth, faintly yellowish in 3% KOH, content monoguttulate to granulated. Basidia  $\pm 40\text{--}65 \times 5.3\text{--}9 \mu\text{m}$ , cylindrical to narrowly clavate, sterigmata  $5.9\text{--}7.2 \mu\text{m}$  long, cornuted (1–) 2–5(–6) per basidium, immature basidia with evenly granulate, light yellowish content, basal septa with clamps. Basidioles numerous with opaque light yellow content in 3% KOH. Pileipellis epicutis with projecting cystidium end subclavate to clavate cells,  $\pm 50\text{--}128 \mu\text{m}$  long, made up of radially to subradially arranged hyphae,  $2.5\text{--}13 \mu\text{m}$  diameter, wall slightly thick and faintly yellowish, context hyphae cylindrical  $\pm 3\text{--}17 \mu\text{m}$  diameter, slightly thick walled. Hymenophoral trama interwoven with cylindrical hyphae

$\pm 2.7$ – $4.5$   $\mu\text{m}$  wide. Pleurocystidia and cheilocystidia absent. Stipe cuticle made up of subclavate to clavate hyphae, thin to slightly thick walled,  $\pm 2.5$ – $3.5$   $\mu\text{m}$  wide, contents similar to pileipellis, septa frequently clamped.

Specimens examined: India. Himachal Pradesh, District-Chamba, Khajjiyar (near the tourist information center), 28 September 2007, PUN3883 (holotype); Suala (25 km from the Khajjiyar guest house), 28 September 2007, PUN4128 (Paratype); Bharmour (5 km from the Bharmour bus stand), 30 September 2007, PUN4126 (Paratype). Habitat and distribution: Gregarious to caespitose; on soil under trees of *Cedrus deodara*.

#### Remarks

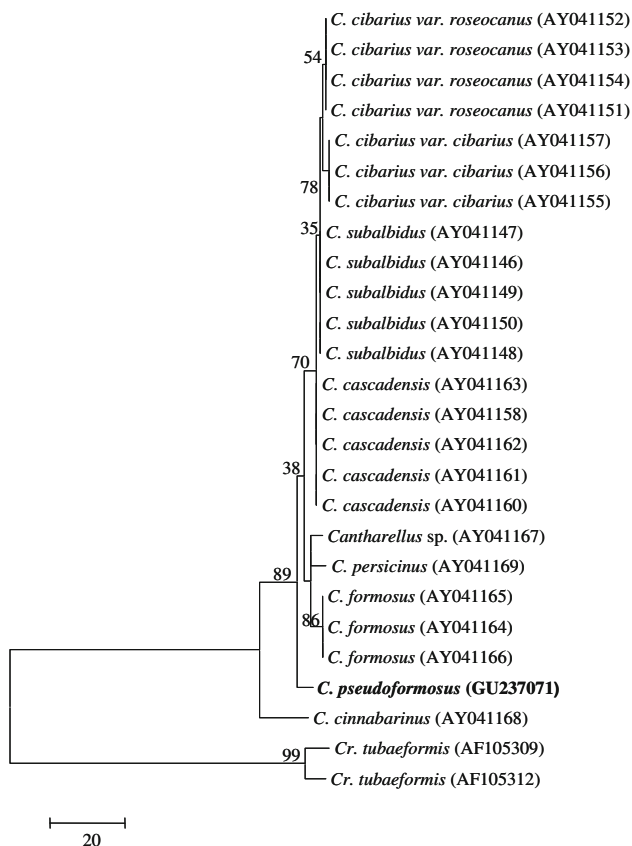
The PCR product amplified with ITS1 and ITS4 was  $\sim 1,400$  bp in length, and the 5'-end of the nuclear large subunit rRNA amplified with ITS4R and LR5 was  $\sim 900$  bp. The length of the ITS region of *Cantharellus pseudoformosus* described in this study varied with the ITS regions of *C. formosus* Corner (1,690 bp), *C. cibarius* Fr. (1,490 bp), *C. cascadenis* Dunham, O'Dell & R. Molina (1,490 bp), and *C. subalbidus* A.H. Sm. & Morse (1,490 bp), as reported

by Dunham et al. (2003a). BLAST analysis results showed no close matches with existing sequences of *Cantharellus*. The maximum-parsimony analysis of nuclear large subunit rRNA (LSU) sequences yielded a tree shown in Fig. 3 of 121 most parsimonious trees. The LSU matrix consisted of 26 taxa with *Craterellus tubaeformis* as an outgroup. The aligned dataset was 829 characters, of which 154 were parsimony informative with a consistency index (CI) of 0.91, retention index (RI) of 0.92, and composite index of 0.84. Bootstrap consensus showed splits between *C. pseudoformosus* and a poorly resolved clade containing *C. cibarius*, *C. cascadenis*, *C. subalbidus*, and *C. formosus* with LSU sequences.

From these results, it was concluded that our collection is morphologically and microscopically similar to *C. formosus* as described by Pilz et al. (2003). However, the molecular analysis of LSU and ITS sequences showed *C. pseudoformosus* is distinct from *C. formosus*. The maximum-parsimony analysis of the LSU and BLAST results of ITS sequences demonstrated that *C. pseudoformosus* as reported in this study is a new species.

#### References

- Arora D, Dunham SM (2008) A new, commercially valuable chanterelle species, *Cantharellus californicus* sp. nov., associated with live oak in California, USA. *Econ Bot* 62:376–391
- Corner EJM (1966) A monograph of cantharelloid fungi. Oxford University Press, London
- Danell E (1994) *Cantharellus cibarius*: mycorrhiza formation and ecology. Acta Univ Ups. Comprehensive Summaries of Uppsala Dissertations from the Faculty of Science and Technology 35. Uppsala University, Uppsala
- Danell E (1999) *Cantharellus*. In: Cairney JWG, Chambers SM (eds) Ectomycorrhizal fungi: key genera in profile. Springer, Berlin, pp 253–267
- Dunham SM, O'Dell TE, Molina R (2003a) Analysis of nrDNA sequences and microsatellite allele frequencies reveals a cryptic chanterelle species *Cantharellus cascadenis* sp. nov. from the American Pacific Northwest. *Mycol Res* 107:1163–1177
- Dunham SM, Kretzer A, Pfenner ME (2003b) Characterization of Pacific golden chanterelle (*Cantharellus formosus*) genet size using co-dominant microsatellite markers. *Mol Ecol* 12:1607–1618
- Hall TA (1999) BioEdit: a user friendly biological sequence alignment editor and analysis program for Windows 95/98/NT. *Nucleic Acids Symp Ser* 41:95–98
- Maerz A, Paul MA (1930) A dictionary of colour. McGraw-Hill, London
- Nei M, Kumar S (2000) Molecular evolution and phylogenetics. Oxford University Press, New York
- Pilz D, Norvell L, Danell E, Molina R (2003) Ecology and management of commercially harvested chanterelle mushrooms. U.S. Department of Agriculture, Pacific Northwest Research Station, Portland
- Redhead SA, Norvell LL, Danell E (1997) *Cantharellus formosus* and the Pacific golden chanterelle harvest in western North America. *Mycotaxon* 65:285–322



**Fig. 3** A phylogram of one of the most parsimonious trees found in the analyses of the nuclear large subunit rRNA (LSU) alignment

- Singer R (1986) The Agaricales in modern taxonomy, 4th edn. Koeltz Scientific Books, Koenigstein
- Tamura K, Dudley J, Nei M, Kumar S (2007) MEGA4: Molecular Evolutionary Genetics Analysis (MEGA) software version 4.0. *Mol Biol Evol* 24:1596–1599
- Thiers HD (1985) The Agaricales (gill fungi) of California: Cantharellaceae. Mad River Press, Eureka
- van Kan JAL, van den Ackerveken GFJM, de Wit PJGM (1991) Cloning and characterization of the cDNA of avirulence avr9 of the fungal pathogen *Cladosporium fulvum*, the casual agent of tomato leaf mold. *Mol Plant–Microbe Interact* 4:52–59
- Vilgalys R, Hester M (1990) Rapid genetic identification and mapping of enzymatically amplified ribosomal DNA from several *Cryptococcus* species. *J Bacteriol* 172:4238–4246
- Watling R, Abraham SP (1992) Ectomycorrhizal fungi of Kashmir forests. *Mycorrhiza* 2:81–87
- White TJ, Bruns T, Lee S, Taylor JW (1990) Amplification and direct sequencing of fungal ribosomal RNA genes for phylogenetics. In: Innis MA, Gelfand DH, Sninsky JJ, White TJ (eds) PCR protocols: a guide to methods and applications. Academic Press, New York, pp 315–322